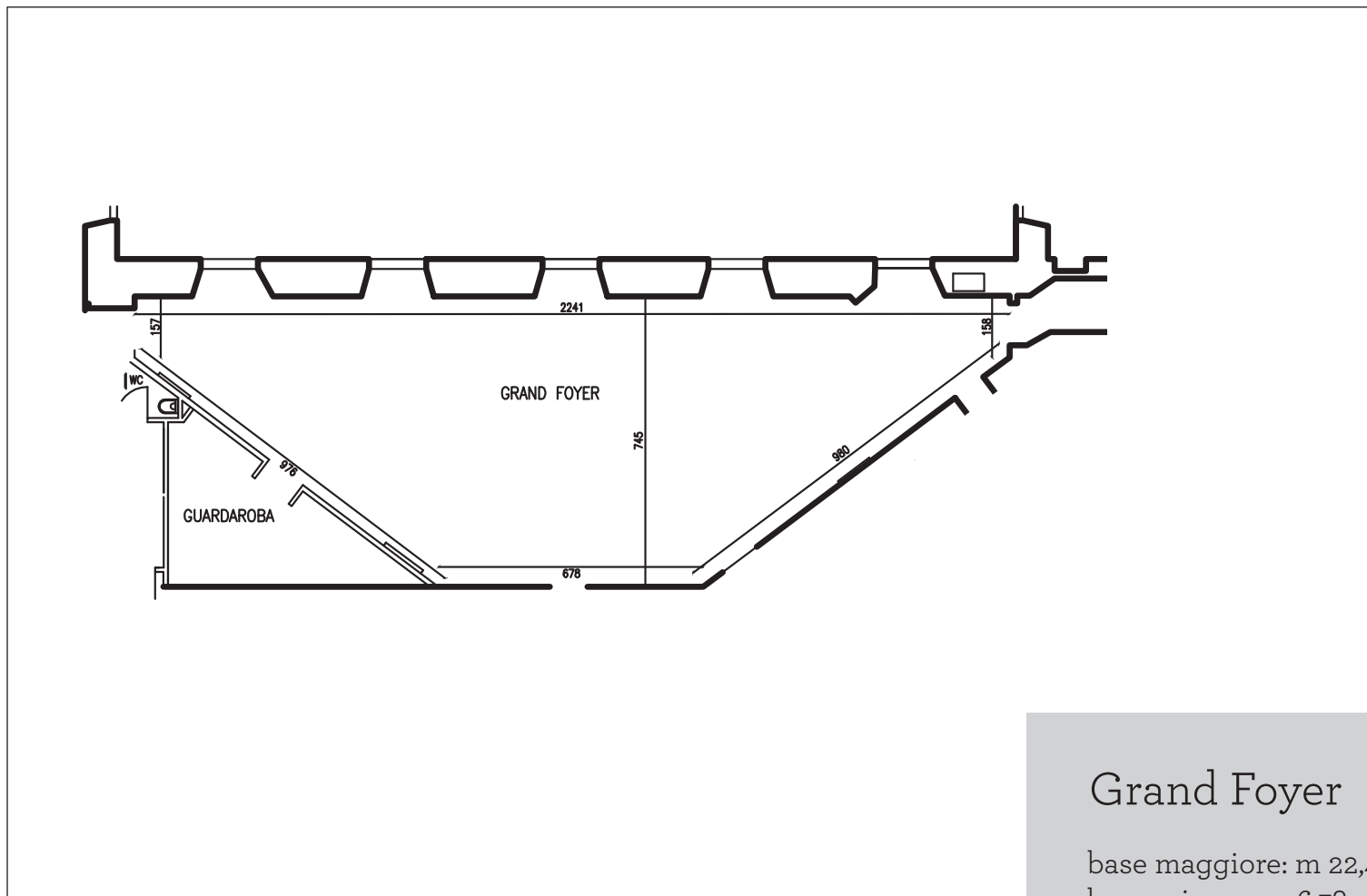
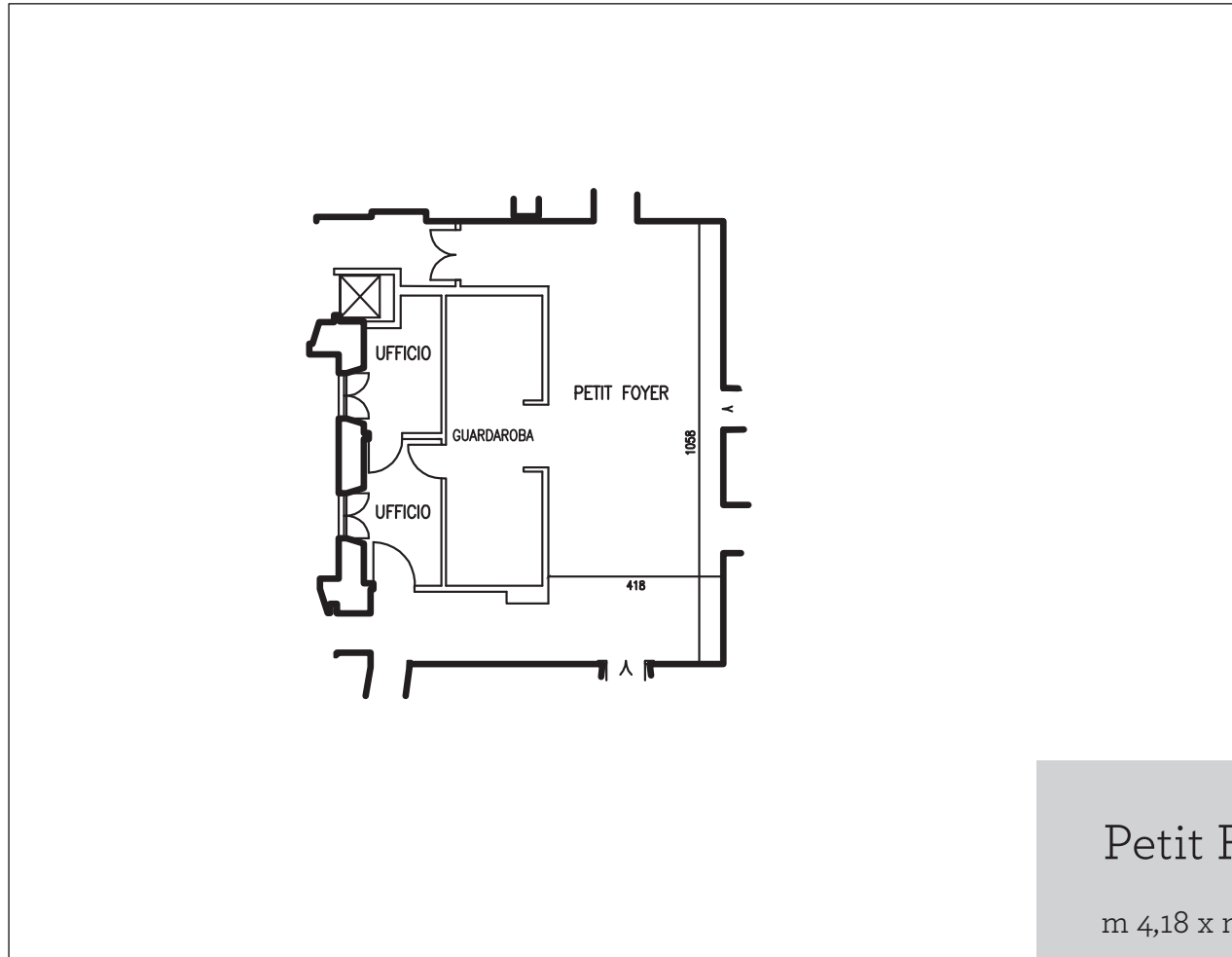


Piano Napoleonico



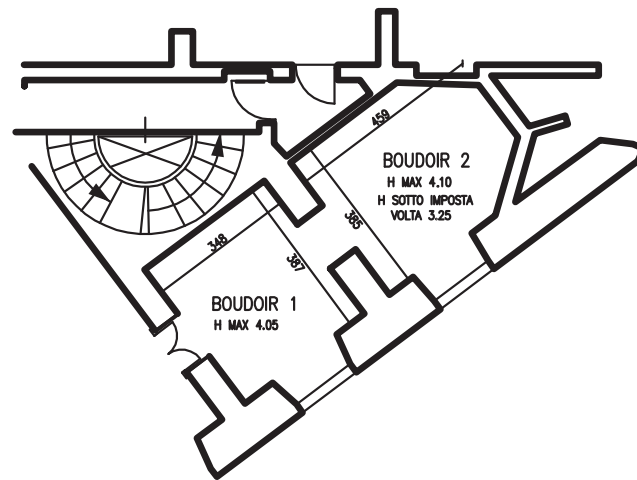
## Grand Foyer

base maggiore: m 22,41,  
base minore: m 6,78,  
distanza tra le due pareti: m 7,45  
lati obliqui: m 9,80



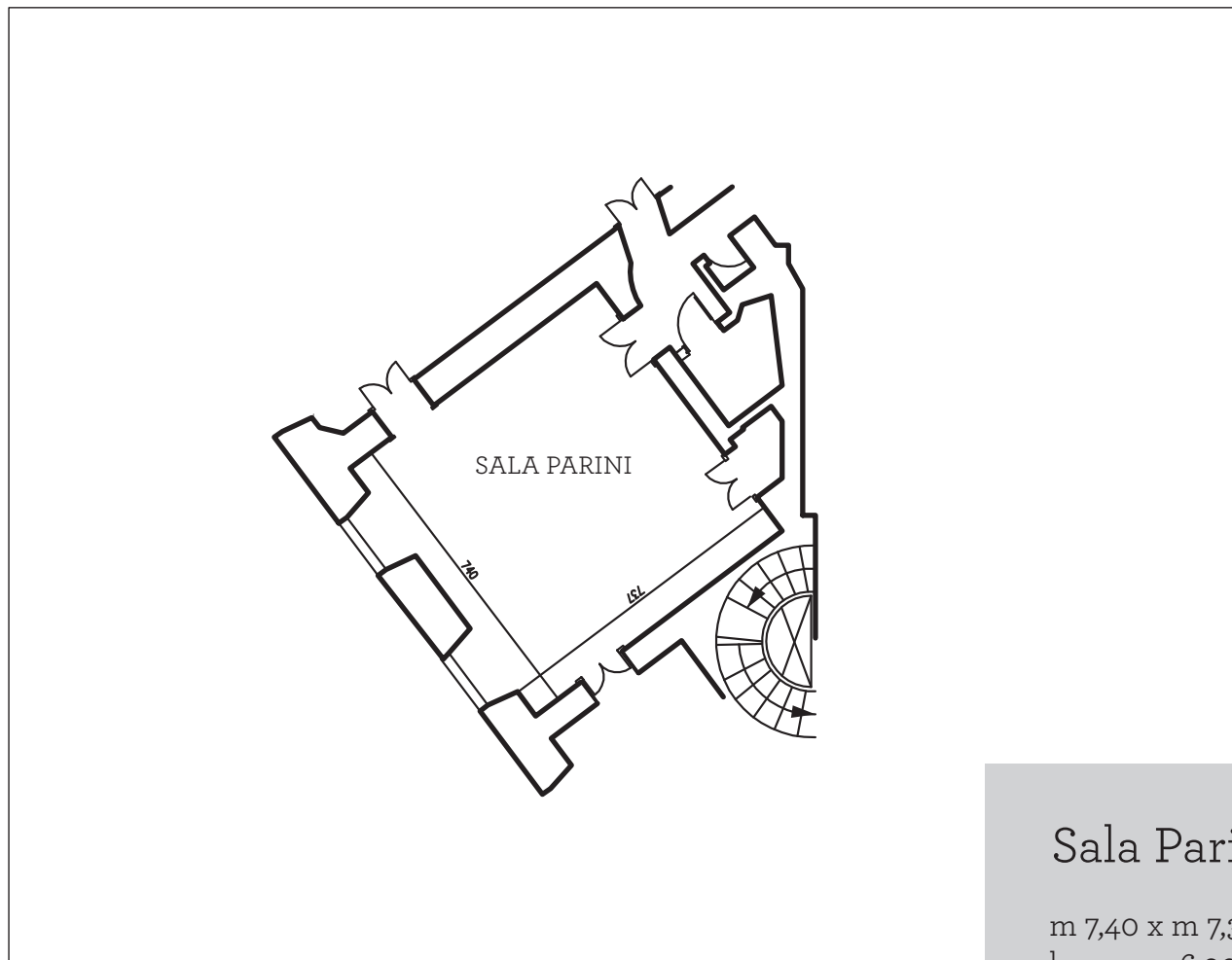
## Petit Foyer

m 4,18 x m 10,58



## Boudoir

- 1) m 3,87 x m3,48 h max 4,05
- 2) m3,85 x m 4,59 h mx 410

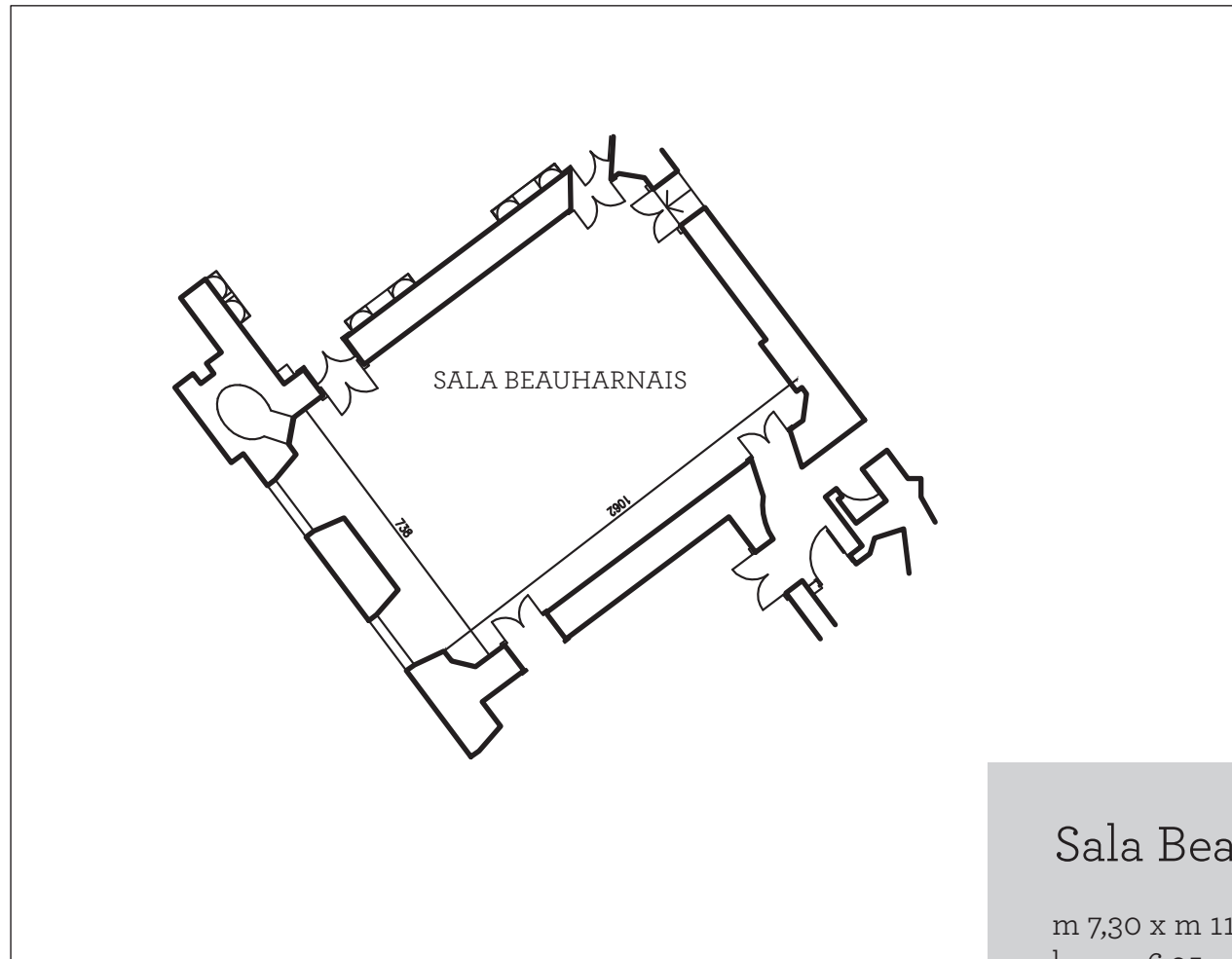


## Sala Parini

m 7,40 x m 7,37

h max m 6,90

h sotto imposta volta m 4,75



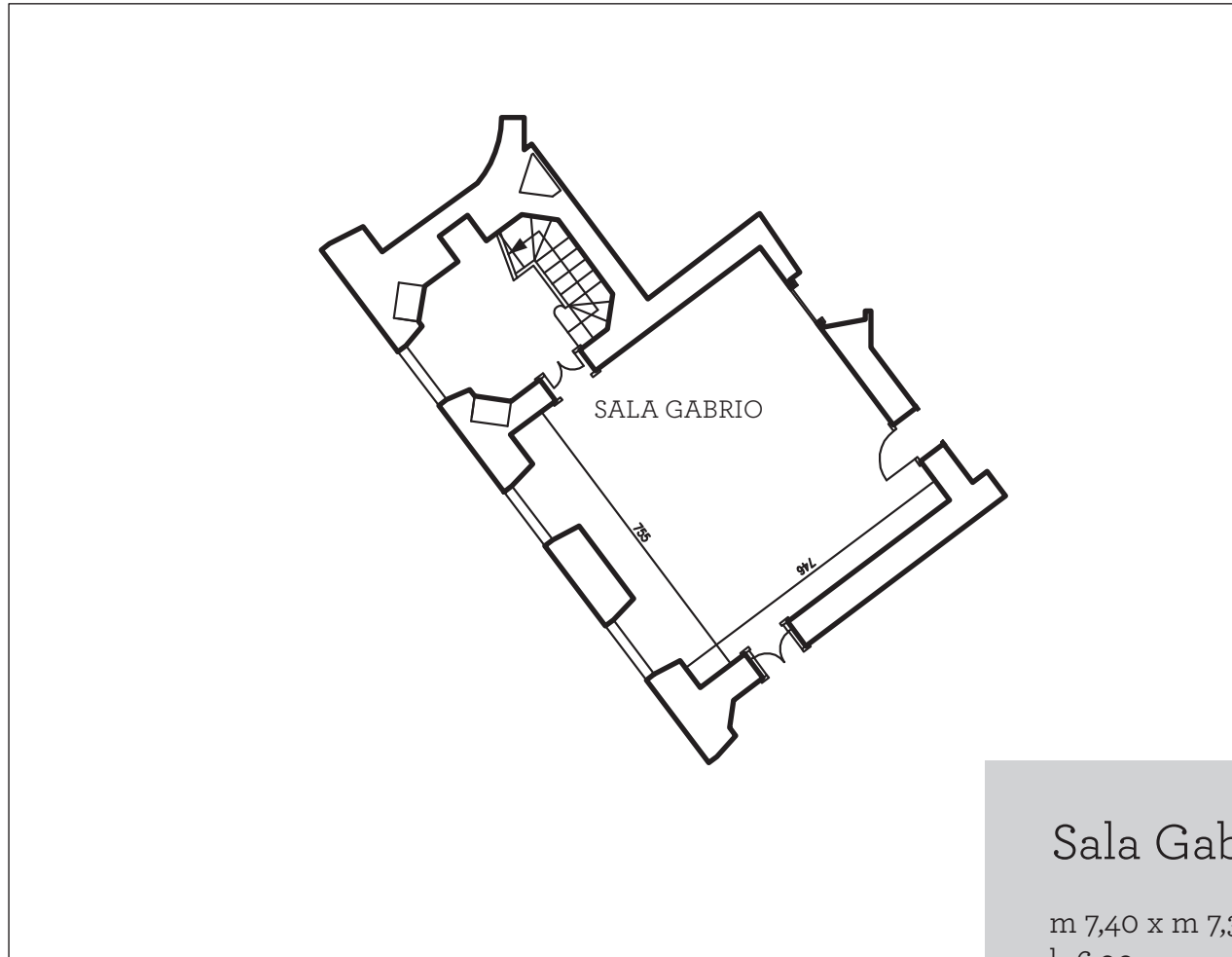
## Sala Beauharnais

m 7,30 x m 11,09  
h max 6.95



## Sala Gian Galeazzo

m 7.30 x m 11.09  
h max m 6.95



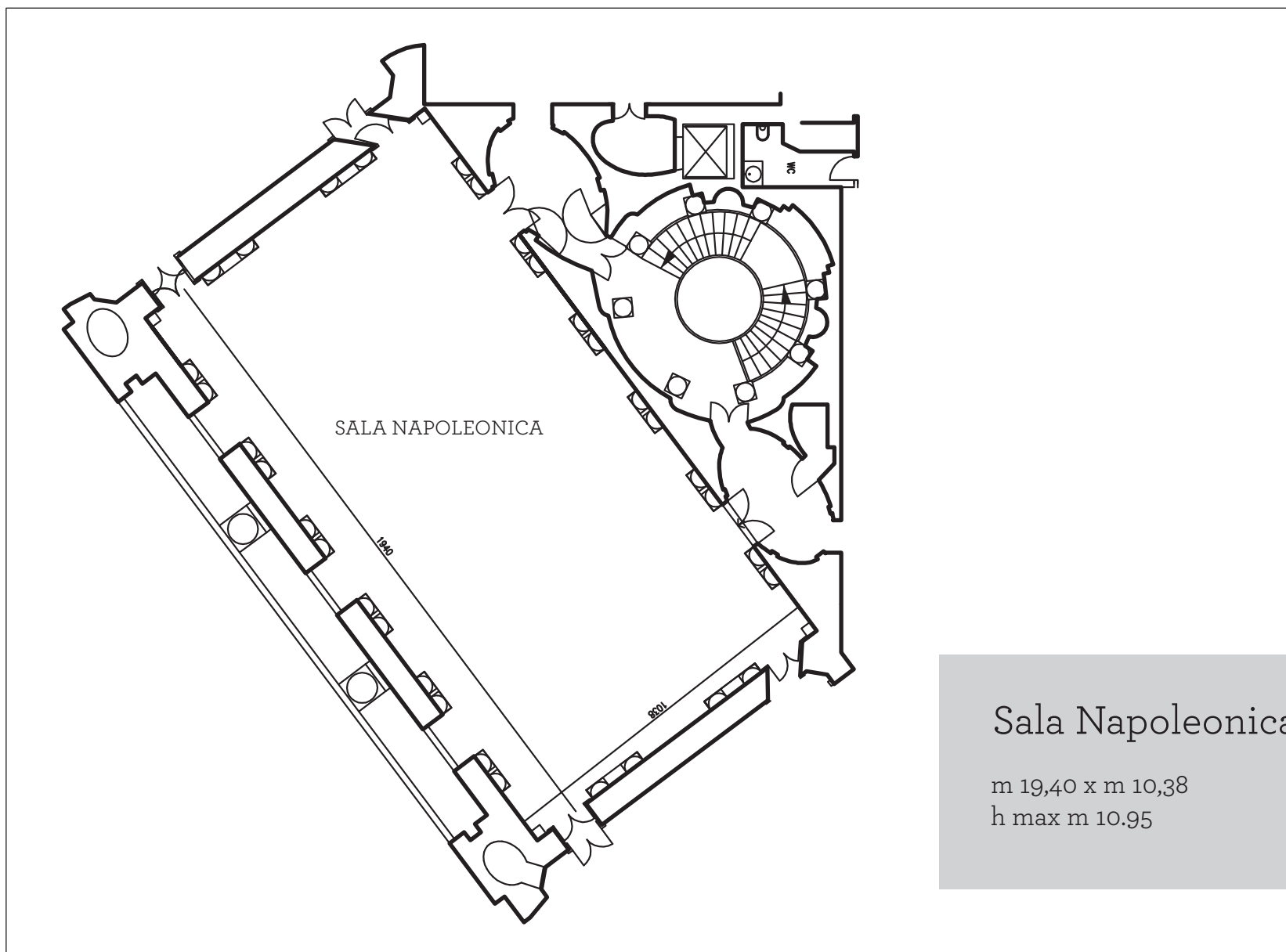
## Sala Gabrio

m 7,40 x m 7,37

h 6,90

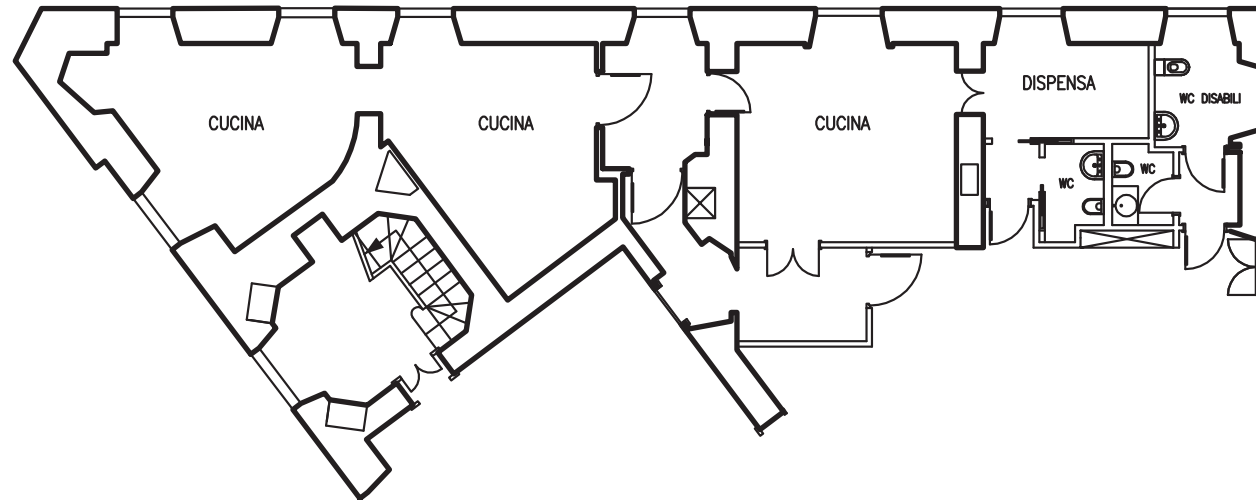
h sotto imposta volta m 4,75





## Sala Napoleonica

m 19,40 x m 10,38  
h max m 10.95



Cucine